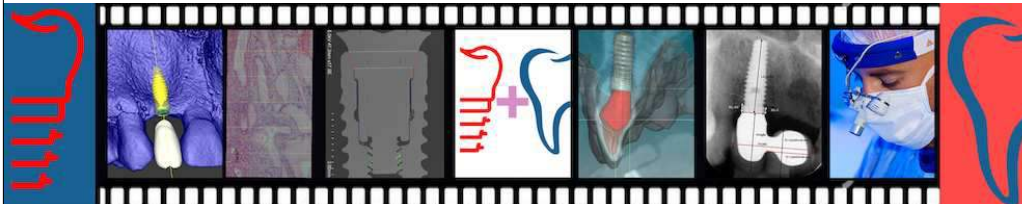


ITI Study Club Lemesos

31st October 2020

Nikos Mattheos

www.mattheos.net



Some notes:

- about insertion torque, primary stability and implant design:

<https://www.mattheos.net/from-friction-stability-to-osseointegration-and-all-things-in-between/>

- about the supracrestal complex and its significance

<https://www.mattheos.net/implant-supracrestal-complex/>

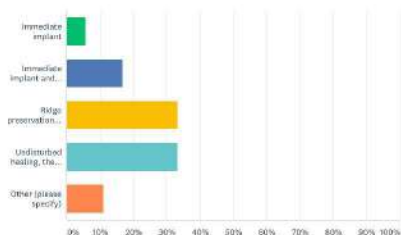
- two prospective studies on immediate implant placement:

<https://pubmed.ncbi.nlm.nih.gov/28429394/>
<https://pubmed.ncbi.nlm.nih.gov/27978602/>

www.mattheos.net

What do you think would be the most likely indicated treatment option after extraction?

Answered: 10 Skipped: 0

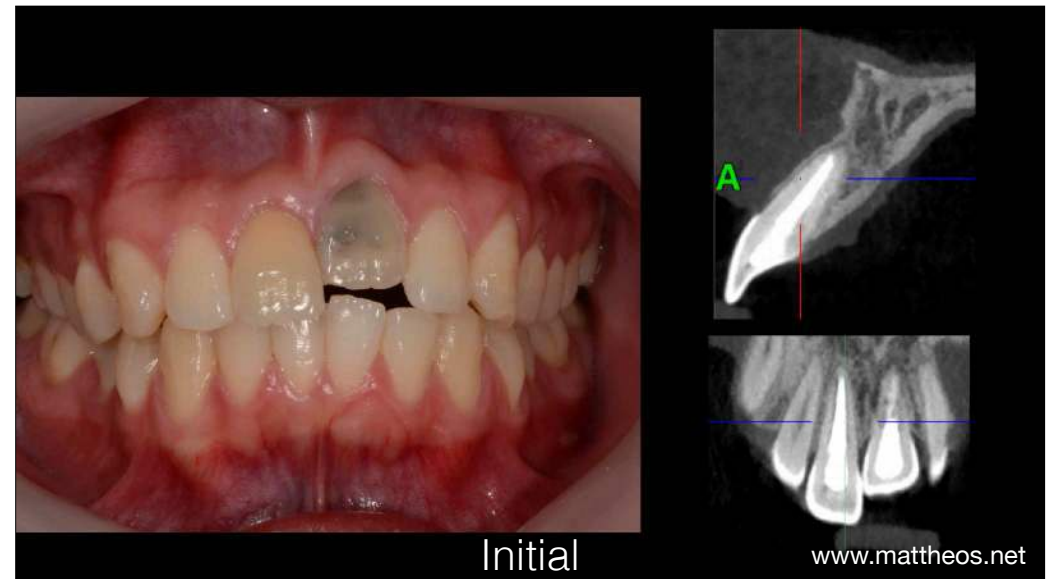


Case GBR

see the surgery at:
<https://youtu.be/cLxpaBNBLfY>

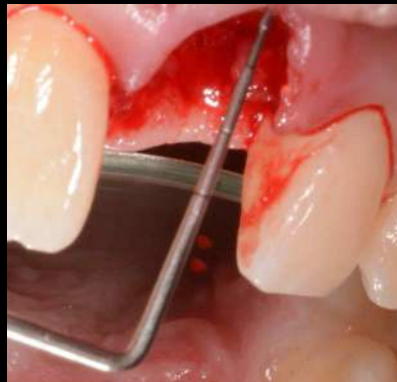
- treated with extraction, natural healing and implant placement with GBR in 6-8 weeks.
- Socket suitable for immediate, but tooth position unfavorable.
- Observe how the soft tissues mature naturally with time once the prosthesis is in place. Initial scars level out.

www.mattheos.net



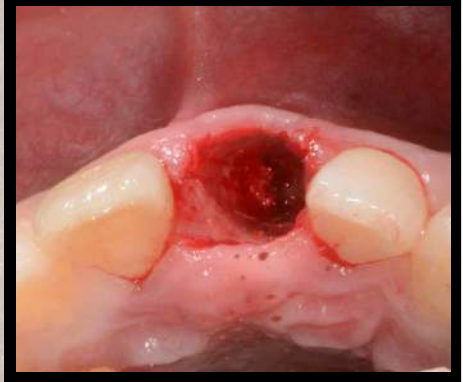


palatal view

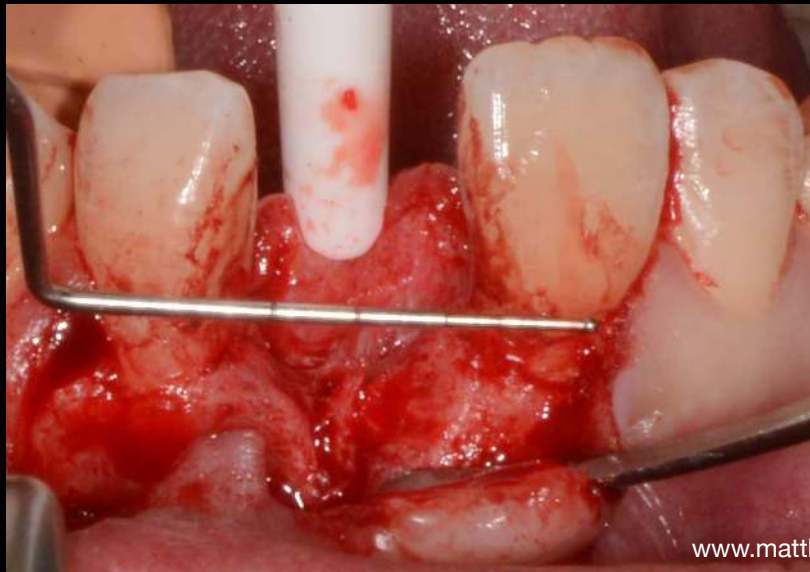


Buccal view

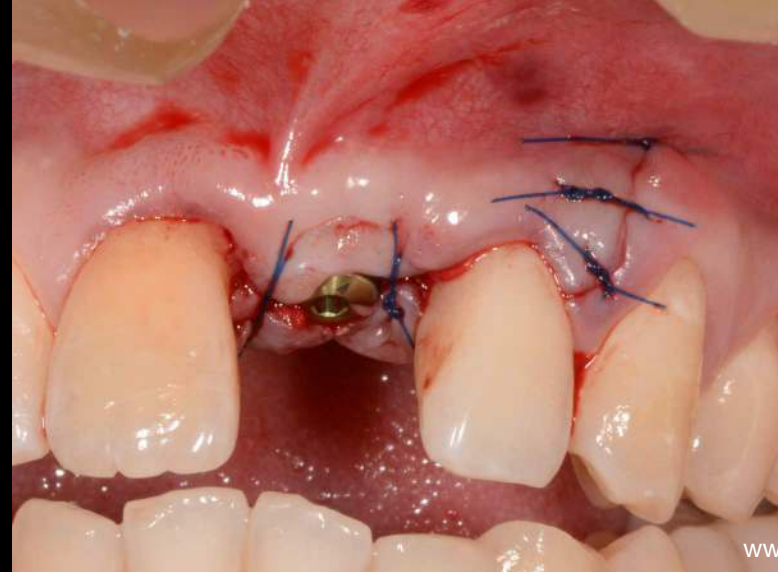
www.mattheos.net



www.mattheos.net

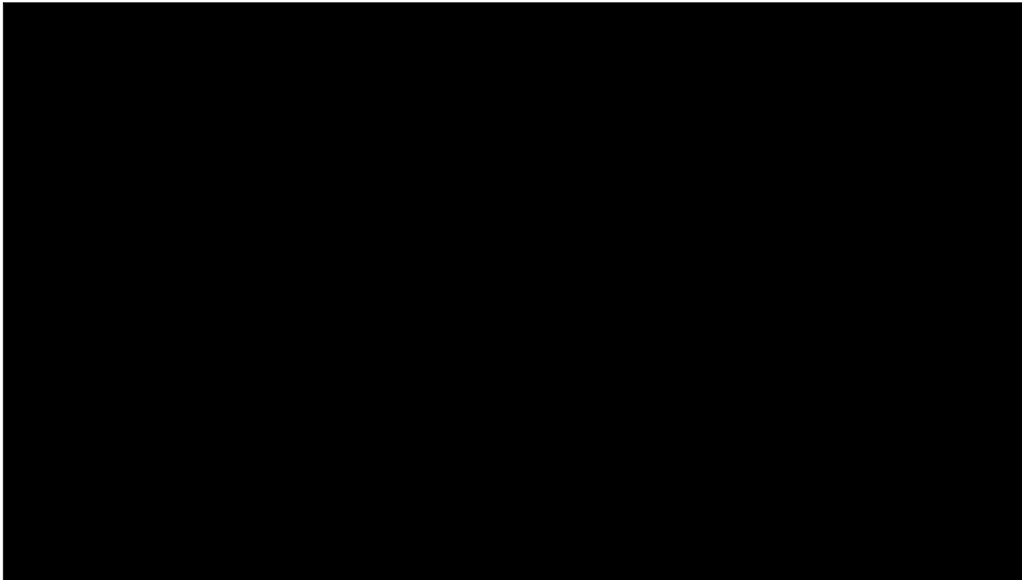


www.mattheos.net



www.mattheos.net





What do you think would be the most likely indicated treatment option for the replacement of 21 with an implant?

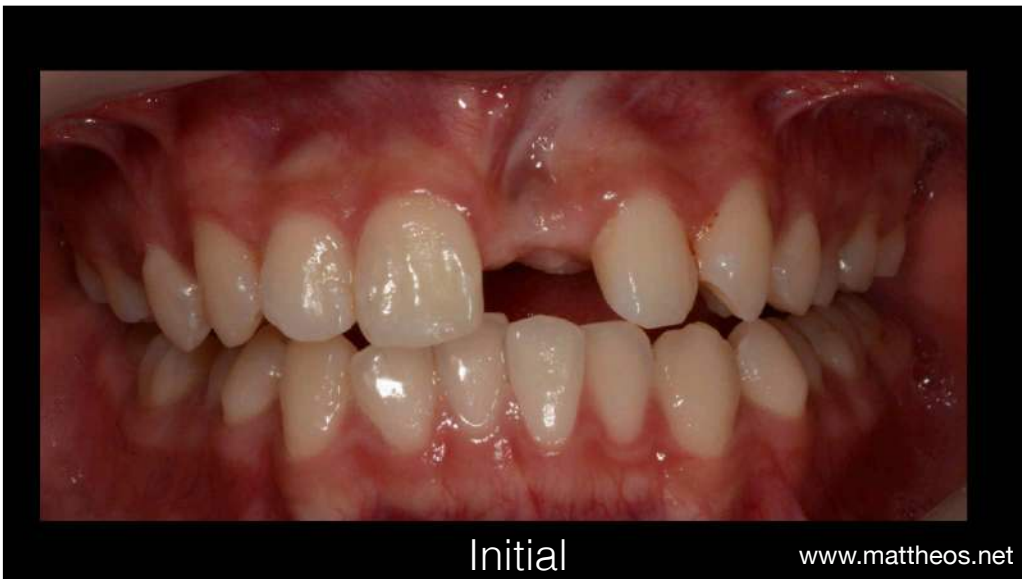
Perceived: 78 - Skipped: 0

Treatment Option	Percentage
Free stage augmentation	~35%
Implant placement w...	~1%
Implant placement w...	~1%
Unlikely free healing the	~1%
Free stage augmentation	~15%
Other (specify)	~4%

Case GBR

see the surgery at:
<https://youtu.be/32bfx8Z9Pw>

- treated with implant placement with GBR.
- Observe how the scar tissue gradually disappears and soft tissue mature naturally with time after surgery. No soft tissue augmentation was required





4 weeks

www.mattheos.net



12 weeks

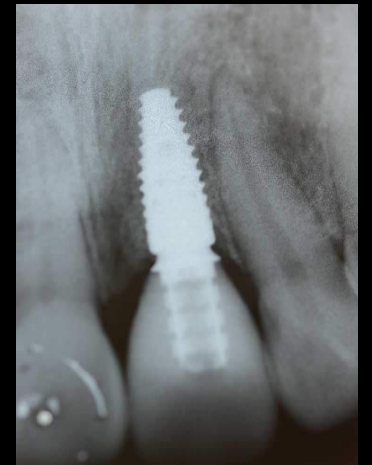
www.mattheos.net



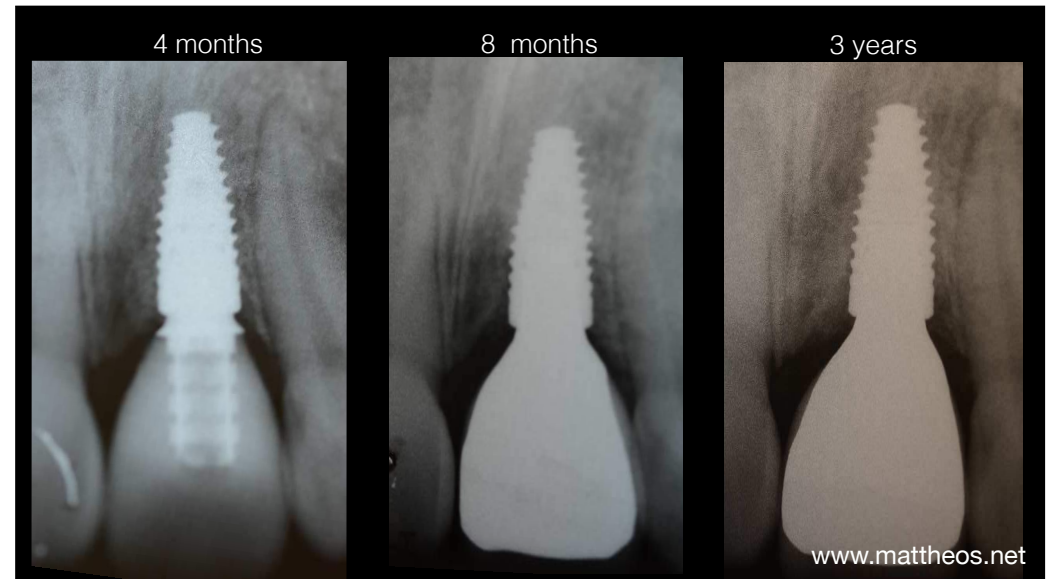
www.mattheos.net



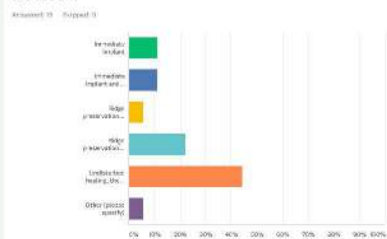
temporary crown



www.mattheos.net



What do you think would be the most likely indicated treatment option after extraction?



Case immediate

see the case at:

https://youtu.be/czM_G1qtpxo

- treated as immediate implant with immediate provisional crown placed with guided surgery.

